

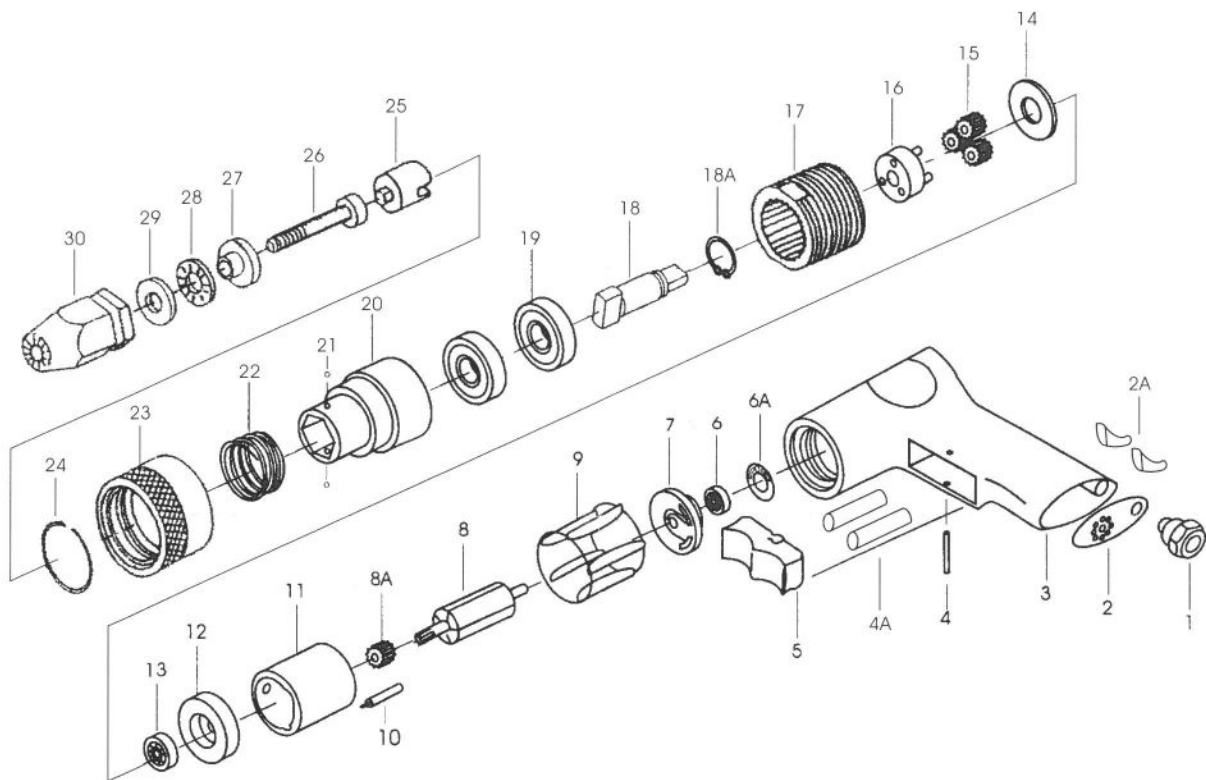
AIR PULL-SETTERS

LG-801 SPECIFICATION

Free speed (R.P.M.)3000
Air pressure 50 psi
Air inlet(N.P.T.)1/4"
Air consumption 5CFM
Thread size:M3, M4
Hose size: 3/8"(9.5m/m)

LG-802 SPECIFICATION

Free speed (R.P.M.)1500
Air pressure 90 psi
Air inlet(N.P.T.)1/4"
Air consumption 5CFM
Thread size:M5, M6
Hose size: 3/8"(9.5m/m)



| PART NO. | Description | NO. Req'd | PART NO. | Description | NO. Req'd |
|----------|----------------------|-----------|----------|------------------------|-----------|
| 802-1 | AIR INLET | 1 | 801-16 | GEAR CAGE | 1 |
| 802-2 | DIFFUSER-EXHAUST | 1 | 802-16 | GEAR CAGE | 1 |
| 802-2A | SILENCER | 3 | 802-17 | INTERNAL GEAR | 1 |
| 802-3 | HANDLE | 1 | 802-18A | RETAINER RING | 1 |
| 802-4 | PIN (Ø3x28) | 1 | 802-18 | DRIVE SPINDLE | 1 |
| 802-4A | THROTTLE VALVE | 2 | 802-19 | BALL BEARING (6200z) | 2 |
| 802-5 | TRIGGER | 1 | 802-20 | NOSE HOUSING | 1 |
| 802-6A | GASKET | 1 | 802-21 | STEEL BALL | 2 |
| 802-6 | BALL BEARING (696zz) | 1 | 802-22 | SPRING | 1 |
| 802-7 | REAR END PLATE | 1 | 802-23 | CHANGE SLEEVE | 1 |
| 802-8 | ROTOR (6T) | 1 | 802-24 | CIRCLIP | 1 |
| 801-8A | SUN GEAR (12T) | 1 | 802-25 | DRAW BOLT DRIVER | 1 |
| 802-9 | ROTOR BLADE | 5 | 802-26 | SCREW BOLT | 1 |
| 802-10 | ROLLER PIN | 2 | 802-27 | REAR THRUST PLATE | 1 |
| 802-11 | CYLINDER | 1 | 802-28 | THRUST ROLLER BEARINGS | 1 |
| 802-12 | FRONT END PLATE | 1 | 802-29 | THRUST WASHER | 1 |
| 802-13 | BALL BEARING (626zz) | 1 | 802-30 | NOSEPIECE | 1 |
| 802-14 | WASHER | 1 | | | |
| 801-15 | PLANET GEAR (15T) | 3 | | | |
| 802-15 | PLANET GEAR (18T) | 3 | | | |

AIR PULL-SETTERS

LG-803

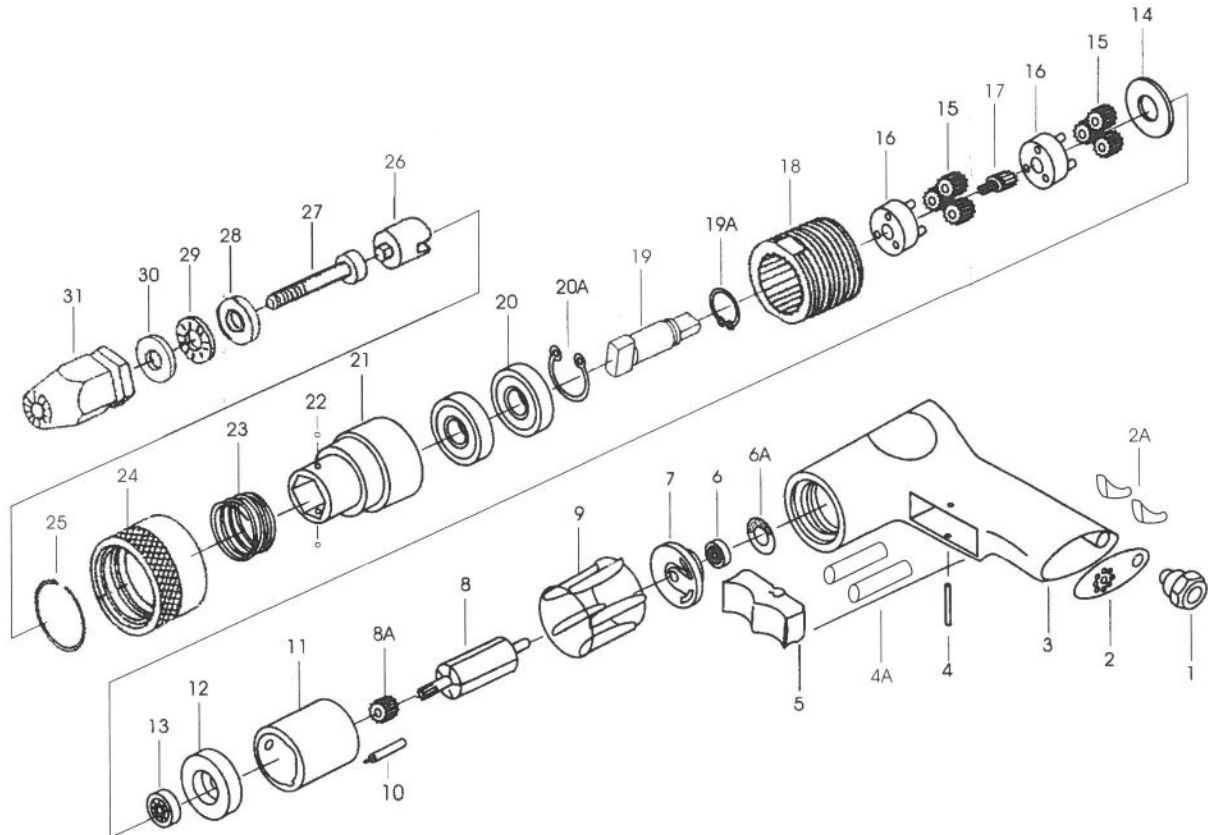
SPECIFICATION

Free speed (R.P.M.)600
 Air pressure 90 psi
 Air inlet(N.P.T.)1/4"
 Air consumption 5CFM
 Thread size:M8, M10
 Hose size: 3/8"(9.5m/m)

LG-804

SPECIFICATION

Free speed (R.P.M.)400
 Air pressure 90 psi
 Air inlet(N.P.T.)1/4"
 Air consumption 5CFM
 Thread size:M8, M10
 Hose size: 3/8"(9.5m/m)



| PART NO. | Description | NO. Req'd |
|----------|--------------------------|-----------|
| 803-1 | AIR INLET | 1 |
| 803-2 | DIFFUSER-EXHAUST | 1 |
| 803-2A | SILENCER | 3 |
| 803-3 | HANDLE | 1 |
| 803-4 | PIN (Ø3x28) | 1 |
| 803-4A | THROTTLE VALVE | 2 |
| 803-5 | TRIGGER | 1 |
| 803-6A | GASKET | 1 |
| 803-6 | BALL BEARING (696zz) | 1 |
| 803-7 | REAR END PLATE | 1 |
| 803-8A | SUN GEAR | 1 |
| 803-8 | ROTOR (6T) | 1 |
| 804-8 | ROTOR (9T) | 1 |
| 803-9 | ROTOR BLADE | 5 |
| 803-10 | ROLLER PIN | 2 |
| 803-11 | CYLINDER | 1 |
| 803-12 | FRONT END PLATE (Ø34xØ6) | 1 |
| 804-12 | FRONT END PLATE (Ø34xØ8) | 1 |
| 803-13 | BALL BEARING (626zz) | 1 |
| 804-13 | BALL BEARING (698zz) | 1 |
| 803-14 | WASHER | 1 |
| 803-15 | PLANET GEAR (15T) | 6 |
| 804-15 | PLANET GEAR (16T) | 6 |

| PART NO. | Description | NO. Req'd |
|----------|------------------------|-----------|
| 803-16 | GEAR CAGE | 2 |
| 804-16 | GEAR CAGE | 2 |
| 803-17 | SUN GEAR (12T) | 1 |
| 804-17 | SUN GEAR (9T) | 1 |
| 803-18 | INTERNAL GEAR | 1 |
| 804-18 | INTERNAL GEAR | 1 |
| 803-19A | RETAINER RING | 1 |
| 803-19 | DRIVE SPINDLE | 1 |
| 803-20 | BALL BEARING (6200z) | 2 |
| 803-20A | RETAINING RING | 1 |
| 803-21 | NOSE HOUSING | 1 |
| 803-22 | STEEL BALL | 2 |
| 803-23 | SPRING | 1 |
| 803-24 | CHANGE SLEEVE | 1 |
| 803-25 | CIRCLIP | 1 |
| 803-26 | DRAW BOLT DRIVER | 1 |
| 803-27 | SCREW BOLT | 1 |
| 803-28 | THRUST WASHER | 1 |
| 803-29 | THRUST ROLLER BEARINGS | 1 |
| 803-30 | THRUST WASHER | 1 |
| 803-31 | NOSEPIECE | 1 |