

MIRATECH

RIVETS | INSERTS

NEW

M

WALL PANEL RIVET

Our wall panel rivet is designed for connecting parts with weak bearing capacity and for riveting composite plates to other components. The locking structure adopts our inclined locking groove. This allows for a lower bearing pressure on the connected parts during installation.

Perfect fastener for use in the commercial vehicle manufacturing and soft materials that require a high level of tensile and shear strength. The result is a high efficiency installation process with a very esthetic result on both sides.

Perfect for assembly of Metal Clad panels, FRP or honeycomb Fast installation by a single person with lock option. Wide variety of models and colors. Local manufacturing and encapsulation for fast delivery.

Completely watertight, UV protector in the plastic will keep the head intact for a long time. Can be produced in small lots for specific applications.

The panel rivet can be installed with various tools and ,nose assemblies such as Huck or Avdel.

Our rivet pin is available in 2 options

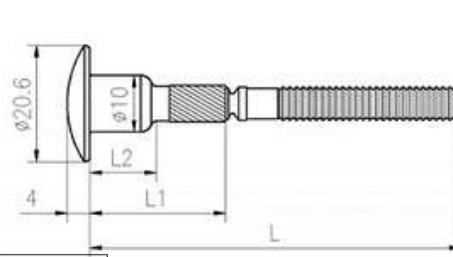
- Zinc coated head
- Plastic encapsulated head in various colors



450.939.5289

WWW.MIRATECH.CA

STEEL PIN TECHNICAL DATA



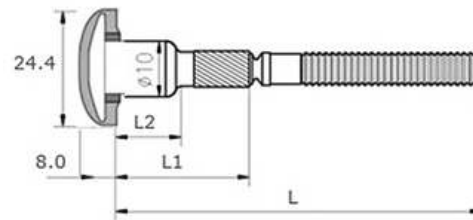
Model Type	Grip Range Metric	Grip Range Inch	L	L1	L2
RP-10-13	11.4-14.3	.437-.562	53.5	11.5	--
RP-10-14	12.7-15.9	.500-.625	55.1	13.1	--
RP-10-16	14.3-17.5	.562-.687	56.7	14.7	--
RP-10-18	15.9-19.1	.625-.750	58.3	16.3	4.0
RP-10-19	17.5-20.6	.687-.812	59.8	17.8	5.6
RP-10-21	19.2-22.2	.750-.875	61.4	19.4	7.2
RP-10-22	20.6-23.8	.812-.937	63.0	21.0	8.8
RP-10-24	22.2-25.4	.875-1.000	64.6	22.6	10.4
RP-10-25	23.8-27.0	.937-1.062	66.2	24.2	11.9
RP-10-27	25.4-28.6	1.000-1.125	67.8	25.8	13.5
RP-10-29	27.0-30.2	1.062-1.187	69.4	27.4	15.1
RP-10-30	28.6-31.8	1.125-1.250	71.0	29.0	16.7
RP-10-32	30.2-33.3	1.187-1.312	72.6	30.6	18.3
RP-10-33	31.8-34.9	1.250-1.375	74.2	32.2	19.9
RP-10-35	33.3-36.5	1.312-1.437	75.8	33.7	21.5

PIN DIAMETER: 10MM (3/8'')
FINISH: CLEAR ZINC COATING ASTM-B633
RECOMMENDED HOLE SIZE: 10.3-10.7MM
(.405-.421'')

TENSILE:
5300 N IN MAXIMUM GRIP
6270 N IN MEDIUM GRIP
7950 N IN MINIMUM GRIP

TYPICAL CLAMP LOAD: 3520 N

ENCAPSULATED HEAD TECHNICAL DATA



Model Type	Grip Range Metric	Grip Range Inch	L	L1	L2
RPM(-)-12-7L	9.5-12.5	.375-.500	51.3	10.6	--
RPM(-)-12-8L	11.4-14.3	.437-.562	53.5	11.5	--
RPM(-)-12-9L	12.7-15.9	.500-.625	55.1	13.1	--
RPM(-)-12-10L	14.3-17.5	.562-.687	56.7	14.7	4.0
RPM(-)-12-11L	15.9-19.1	.625-.750	58.3	16.3	5.6
RPM(-)-12-12L	17.5-20.6	.687-.812	59.8	17.8	7.2
RPM(-)-12-13L	19.2-22.2	.750-.875	61.4	19.4	8.8
RPM(-)-12-14L	20.6-23.8	.812-.937	63.0	21.0	10.4
RPM(-)-12-15L	22.2-25.4	.875-1.000	64.6	22.6	11.9
RPM(-)-12-16L	23.8-27.0	.937-1.062	66.2	24.2	13.5
RPM(-)-12-17L	25.4-28.6	1.000-1.125	67.8	25.8	15.1
RPM(-)-12-18L	27.0-30.2	1.062-1.187	69.4	27.4	16.7
RPM(-)-12-19L	28.6-31.8	1.125-1.250	71.0	29.0	18.3
RPM(-)-12-20L	30.2-33.3	1.187-1.312	72.6	30.6	19.9
RPM(-)-12-21L	31.8-34.9	1.250-1.375	74.2	32.2	21.5

PIN DIAMETER: 10MM (3/8'')
FINISH: CLEAR ZINC COATING
ASTM-B633 (EXCEPT HEAD)

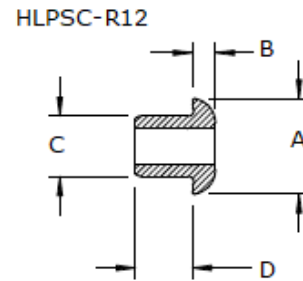
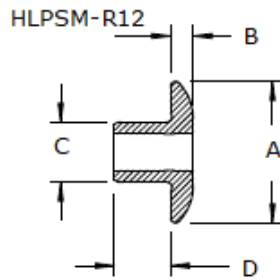
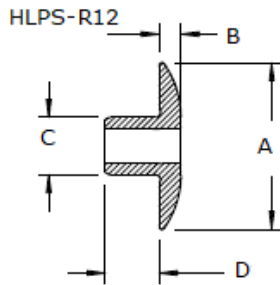
HEAD: INJECTION MOULDED PLASTIC
RECOMMENDED HOLE SIZE: 10.3-10.7MM
(.405-.421'')

TENSILE:
5300 N IN MAXIMUM GRIP
6270 N IN MEDIUM GRIP
7950 N IN MINIMUM GRIP

TYPICAL CLAMP LOAD: 3520 N

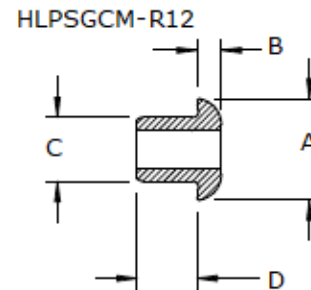
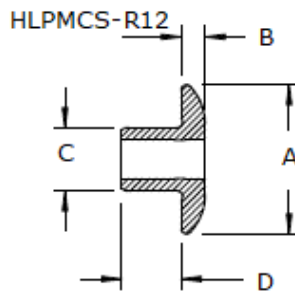
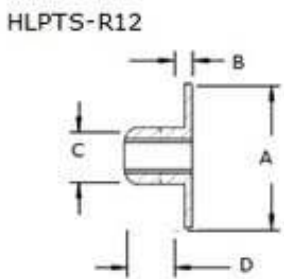
COLLAR TECHNICAL DATA

LONG NECK COLLARS



Model Type	A (max.)	B (max.)	C	D
HLPS-R12	30.0	4.0	10.1	10.0
HLPSM-R12	23.9	4.0	10.1	10.0
HLPSC-R12	16.2	4.0	10.1	10.0

METAL CLAD COLLARS FOR THIN APPLICATIONS



Model Type	A (max.)	B (max.)	C	D
HLPTS-R12	30.0	2.4	10.1	10.0
HLP MCS-R12	20.7	4.3	10.1	6.4
HLPSGCM-R12	16.2	4.3	10.1	6.4

