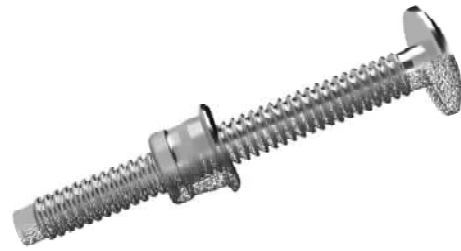


# MIRATECH

Rivet-Inserts



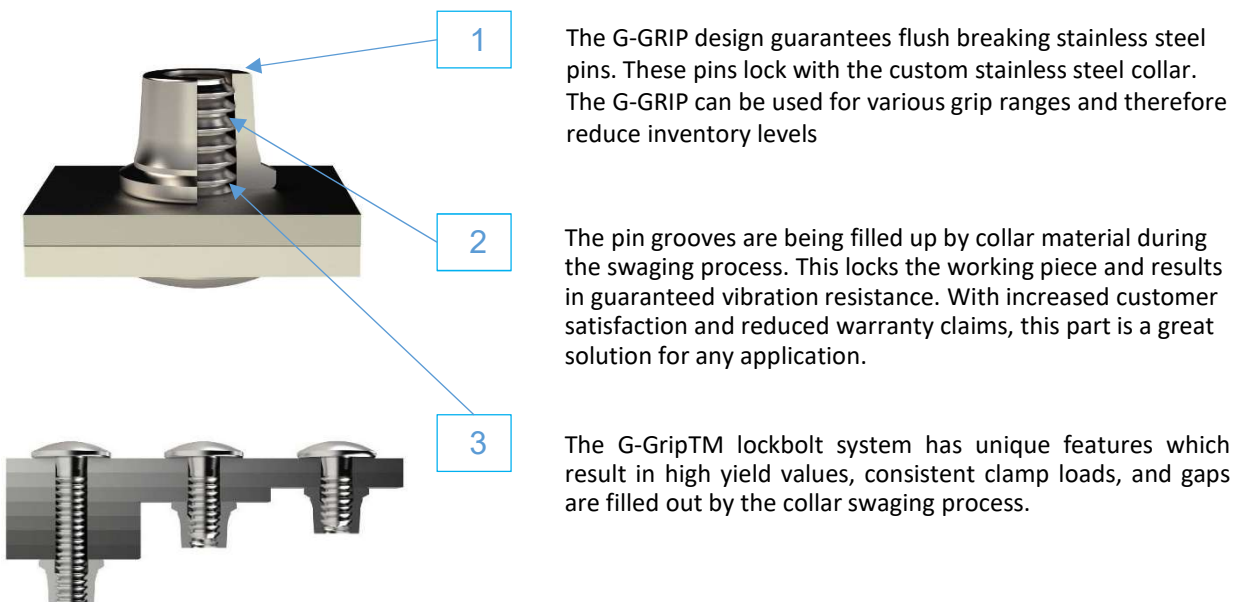
The G-GRIP®, the new technology for stainless steel assembly!

Fast installation, high mechanical properties and really simple to install, this new rivet model can easily eliminate the use of bolts or welding.

Unique on the market, the G-GRIP® will always set the right way in various material thicknesses.

No more delicate torquing of bolts nor any welds to clean!

If you already have a lockbolt tool (Magna-Grip or Maxlok), you don't have any equipment to purchase and you can start using the G-Grip today.



1

The G-GRIP design guarantees flush breaking stainless steel pins. These pins lock with the custom stainless steel collar. The G-GRIP can be used for various grip ranges and therefore reduce inventory levels

2

The pin grooves are being filled up by collar material during the swaging process. This locks the working piece and results in guaranteed vibration resistance. With increased customer satisfaction and reduced warranty claims, this part is a great solution for any application.

3

The G-Grip™ lockbolt system has unique features which result in high yield values, consistent clamp loads, and gaps are filled out by the collar swaging process.

Available in 3/16" (4.8mm) or 1/4" (6.4mm) diameters.

Contact us for a trial!

[info@miratech.ca](mailto:info@miratech.ca)

[www.miratech.ca](http://www.miratech.ca)

450.939.5289